

Comparison of WebEOC[®] *Mapper Lite/Professional* and WebEOC *Maps/Maps Add-on*

The Intermedix team has consulted with numerous clients and invested significant resources into what are proving to be the most intuitive, visually appealing, and comprehensive mapping solutions to date. *Maps* and *Maps Add-on*, the most recent mapping solutions to be developed for WebEOC, respond to the needs of clients while simultaneously bringing to the table a series of new functions that seamlessly integrate with boards for improved workflows and a more comprehensive common operating picture.

Although some basic functions for these solutions are similar to those of the previously offered *Mapper Lite* and *Mapper Professional* solutions, retaining the majority of the features you know and love, the new platforms change the “look and feel” of the overall solutions – for the better.

Maps, the free integrated solution that comes standard with any WebEOC instance, most closely resembles *Mapper Lite* in its function and capabilities. *Maps Add-on*, however, goes above and beyond the standard functions. This new offering, akin to the *Mapper Professional* solution, allows for the creation of an unlimited number of maps, map layers, custom configurations, and more. Together, these solutions ensure you and your response team can effortlessly and effectively use maps during trainings, exercises, and actual emergency incidents.

OVERVIEW

This document compares *Mapper Lite* and *Mapper Professional* features with the same features in *Maps* and *Maps Add-on*, directly highlighting how they differ in appearance and process. Where appropriate, it also touches on elements that make these new mapping solutions more advanced and user-friendly than any previous offerings of similar solutions. Specifically, the following key features and changes are addressed in this document:

- Map creation
- Map layer management
- Icons and symbology
- Feature management
- Map access and navigation
- Improved map tools

This document is not designed to address every aspect of the *Maps* and *Maps Add-on* solutions. Instead, we invite you to read these high-level descriptions, visit the [Client Hub](#) to download the different administrator and user guides, and then upgrade to these solutions to try them out for yourself!

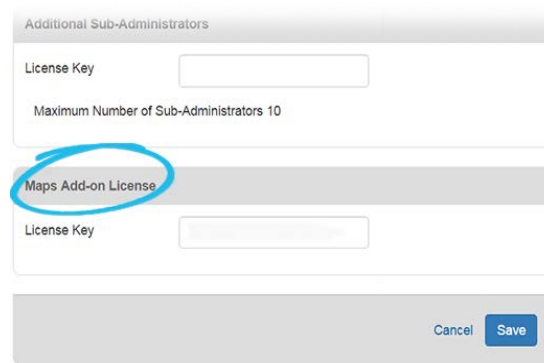
Note: Examples of *Mapper* functions are marked with a yellow star ★. Examples of new or revised *Maps* functions are marked with a blue star ★.

ADMINISTRATION

Installation

The server-side installation process seen in *Mapper Professional* has been eliminated for *Maps Add-on*.

To upgrade to *Maps Add-on*, administrators need merely update to 8.3 and enter their unique license key in the *Maps Add-On License* section of the **System: General** tab.



Additional Sub-Administrators

License Key

Maximum Number of Sub-Administrators 10

Maps Add-on License

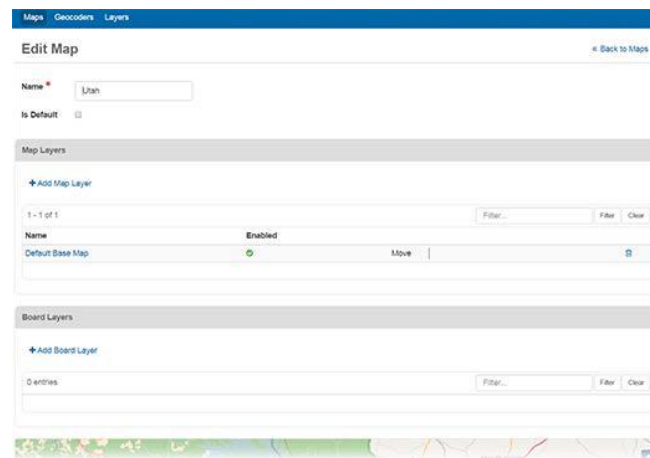
License Key

Cancel Save

Unlimited Map Creation

With *Maps* and *Maps Add-on*, administrators can create an unlimited number of maps instead of just one (as in *Mapper*). When creating a map, administrators decide the map layers to associate with the map and what board data, down to the board view, should be accessible from the map. This flexibility affords better visibility into incidents, helping administrators and users alike digest an abundance of information, including scene statuses, weather conditions, regions, and more.

After a map is created, administrators assign it to the appropriate groups. Only users in the groups identified can view and edit any given map, allowing administrators to fully control map permissions and access.



Maps Geocoders Layers

Edit Map [Back to Maps](#)

Name

Is Default ☐

Map Layers

+ Add Map Layer

1 - 1 of 1 Filter... Filter Clear

Name	Enabled	Move
Default Base Map	<input checked="" type="checkbox"/>	

Board Layers

+ Add Board Layer

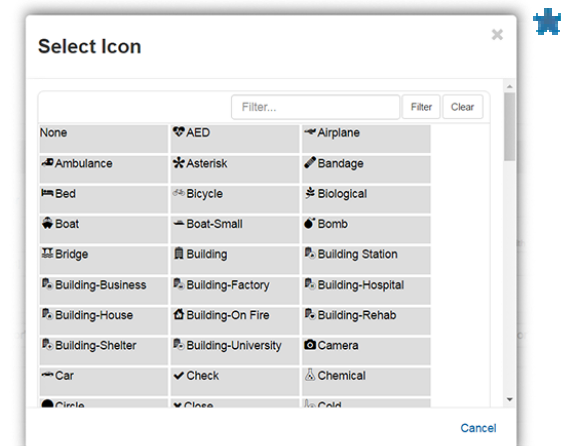
0 entries Filter... Filter Clear

Icons and Symbology

With *Maps* and *Maps Add-on*, administrators can set a default icon to be used on the map for a particular board item via a list or by the assigned board view.

The icons for use are flexible and dynamic, particularly for those with *Maps Add-on*. *Maps Add-on* lets administrators either select an icon from an icon database or upload their own custom icon. The color of the icons themselves is also configurable using the status-field attribute or assigned view color, making each icon distinctly unique.

- **Database Icons** – Use a standard icon from WebEOC's new database of simple yet readily identifiable symbols.



Select Icon

Filter... Filter Clear

None	AED	Airplane
Ambulance	Asterisk	Bandage
Bed	Bicycle	Biological
Boat	Boat-Small	Bomb
Bridge	Building	Building Station
Building-Business	Building-Factory	Building-Hospital
Building-House	Building-On Fire	Building-Rehab
Building-Shelter	Building-University	Camera
Car	Check	Chemical
Circle	Close	Cold

Cancel

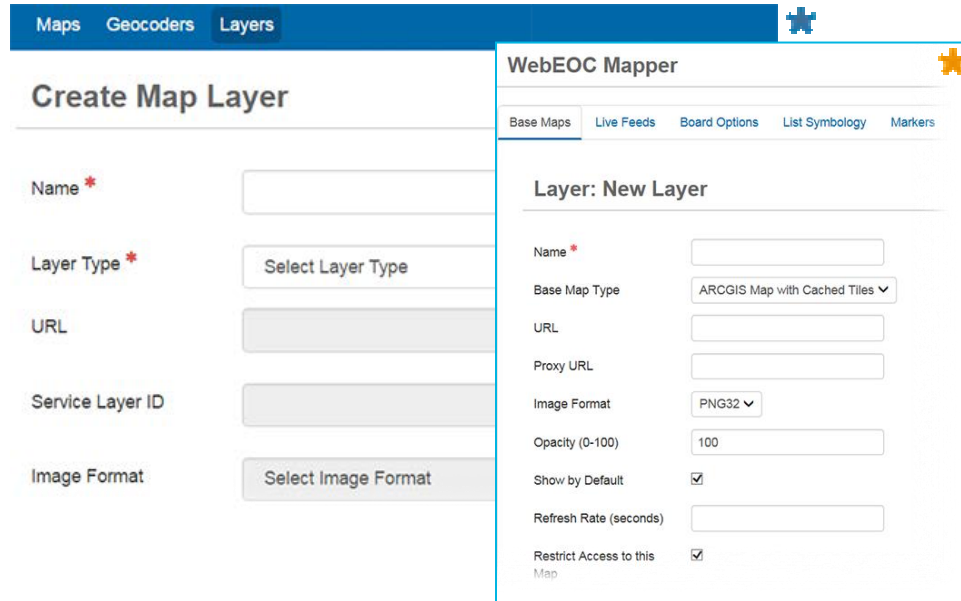
- **Custom Icons** – Upload a custom icon, keeping representative map symbols in line with organizational or industry standards.

ADMINISTRATION (continued)

Layers Management

For those with *Maps Add-on*, the option exists to create any number of map layers. These layers can help to organize places, lines, shapes, and more, controlling how different information is viewed and consumed.

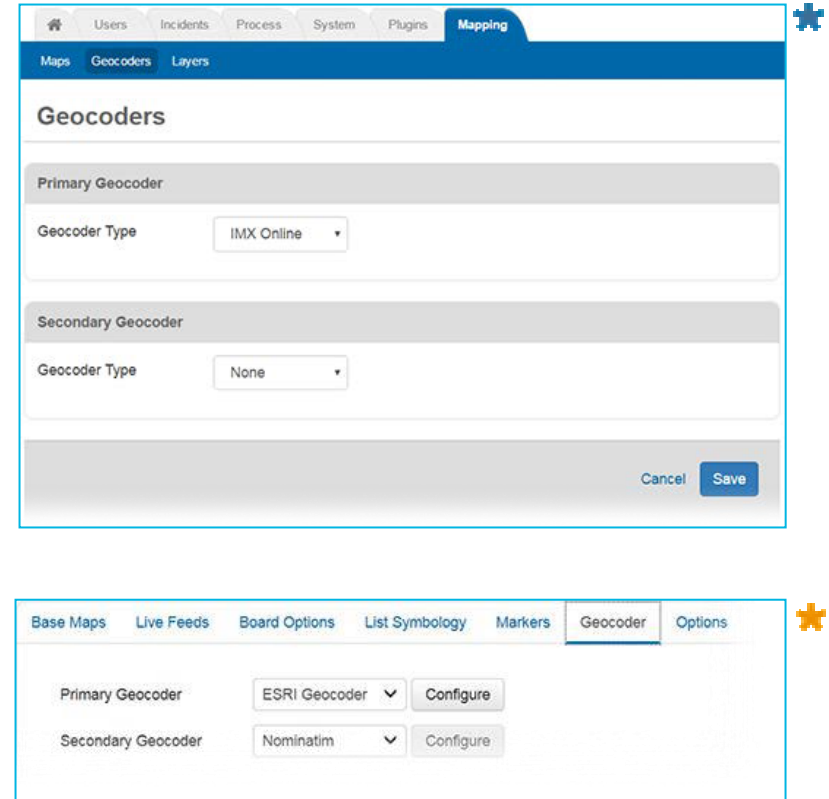
There are five different layer types that can be created: **ESRI Map Service**, **ESRI Feature Service**, **WMS**, **GeoRSS**, and **KML**. The layer type chosen determines the source of the layer's information and how that particular layer behaves.



The screenshot shows two overlapping web forms. The background form is titled 'Create Map Layer' and has fields for 'Name *', 'Layer Type *' (with a 'Select Layer Type' button), 'URL', 'Service Layer ID', and 'Image Format' (with a 'Select Image Format' button). The foreground form is titled 'WebEOC Mapper' and has tabs for 'Base Maps', 'Live Feeds', 'Board Options', 'List Symbology', and 'Markers'. The 'Base Maps' tab is active, showing a 'Layer: New Layer' section with fields for 'Name *', 'Base Map Type' (set to 'ARCGIS Map with Cached Tiles'), 'URL', 'Proxy URL', 'Image Format' (set to 'PNG32'), 'Opacity (0-100)' (set to '100'), 'Show by Default' (checked), 'Refresh Rate (seconds)' (empty), and 'Restrict Access to this Map' (checked).

Geocoder Selection

With *Maps Add-on*, administrators can choose their primary and secondary geocoders. The process for doing so mirrors the process seen in *Mapper Professional*.



The screenshot shows two overlapping web forms. The background form is titled 'Geocoders' and has tabs for 'Maps', 'Geocoders', and 'Layers'. The 'Geocoders' tab is active, showing a 'Primary Geocoder' section with a 'Geocoder Type' dropdown set to 'IMX Online', and a 'Secondary Geocoder' section with a 'Geocoder Type' dropdown set to 'None'. The foreground form is titled 'Geocoder' and has tabs for 'Base Maps', 'Live Feeds', 'Board Options', 'List Symbology', 'Markers', 'Geocoder', and 'Options'. The 'Geocoder' tab is active, showing a 'Primary Geocoder' section with a dropdown set to 'ESRI Geocoder' and a 'Configure' button, and a 'Secondary Geocoder' section with a dropdown set to 'Nominatim' and a 'Configure' button.

Enabling Boards for Maps

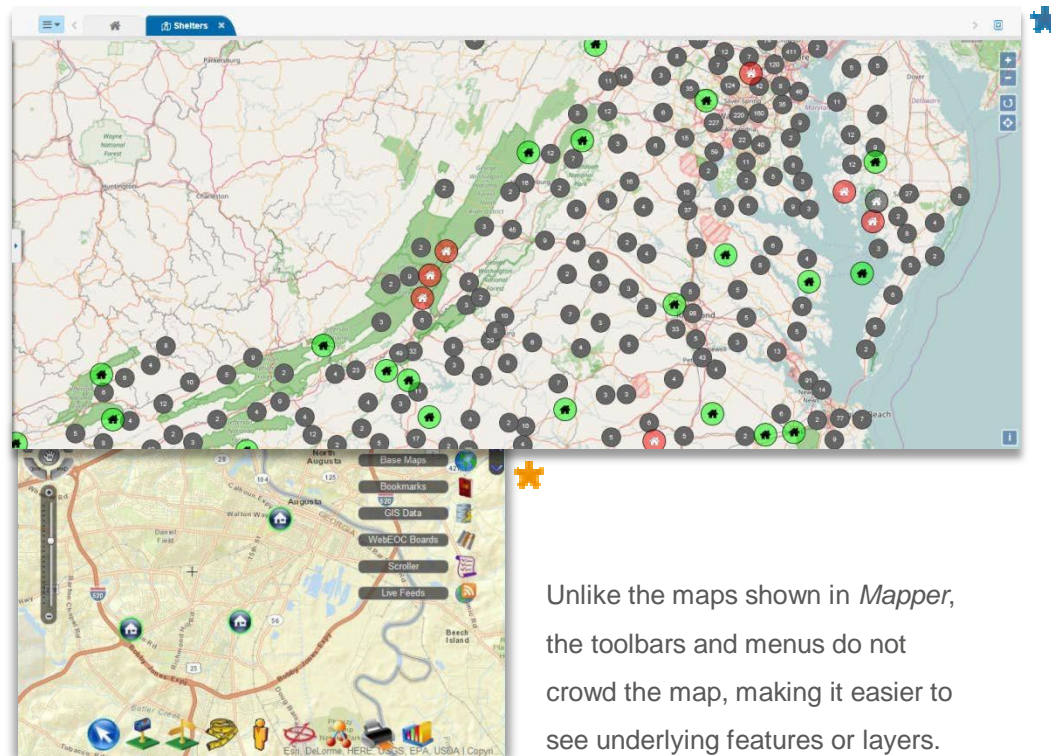
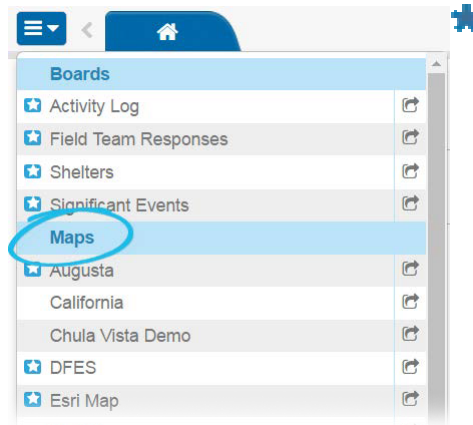
As in *Mapper*, enabling a board for *Maps* involves adding a tag to input and display views. Administrators can use the new `<feature>` tag, which creates a field in the board for storing feature data such as points, lines, polygons, and more. There are also several different methods that can be used and capabilities that can be leveraged when using the new feature tags in *Maps* or *Maps Add-on*.

NAVIGATION

Access to Maps

Maps assigned to a user appear in the control panel, in a separate and distinct *Maps* section just below the *Boards* section.

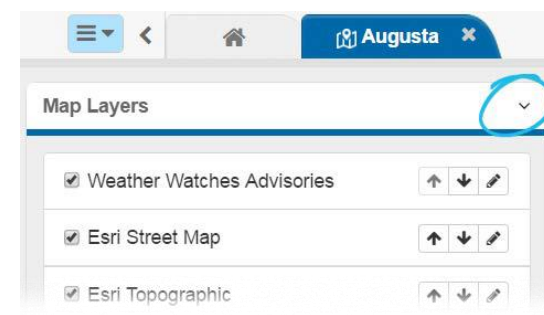
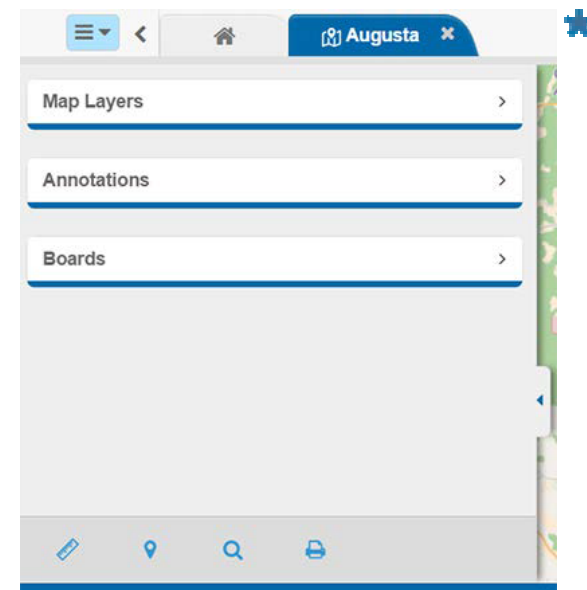
When opened in a new tab or separate window, the map displays the location and zoom level set by the administrator. The newly available icons and collapsible navigation menu facilitate easy viewing and identification of key features in a single glance.



Unlike the maps shown in *Mapper*, the toolbars and menus do not crowd the map, making it easier to see underlying features or layers.

Side Navigation Menu

Navigation is simplified with *Maps*, including all key functions in a side navigation menu that can be conveniently minimized or expanded so users can more easily navigate the map. This navigation menu allows you to manage layers, annotations, boards, and more – in just one location.



The sections in the side navigation menu are expandable, too, to help you focus on one section at a time.

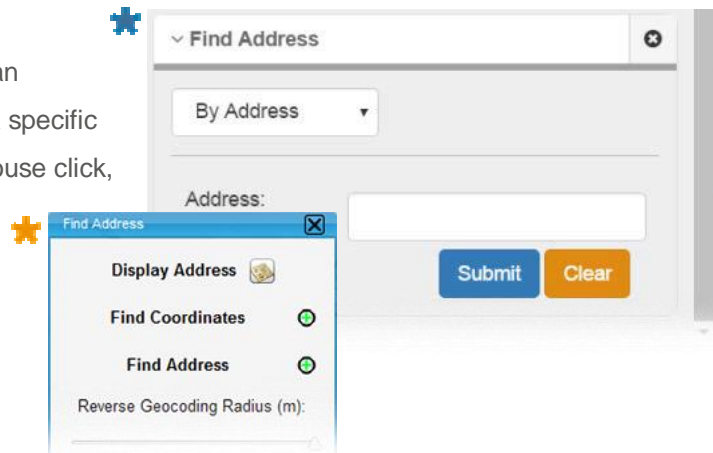
NAVIGATION (continued)

Tools

Many of the same tools found in the old *Mapper* add-ons have been carried over into the *Maps* solutions. The functionality of the tools are similar, but the look and feel are different to better align with the WebEOC 8.0 interface.

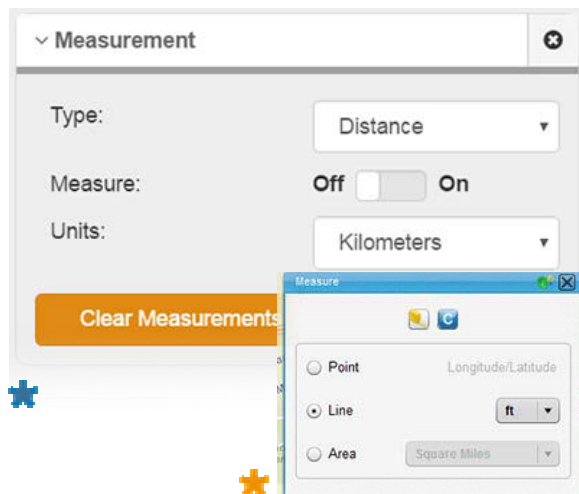
Find an Address Tool

Use the modified Find an Address tool to locate a specific location by address, mouse click, or coordinates.



Measurement Tool

As in its predecessor solution, *Maps Add-on* allows you to measure distances between two or more points on the map. You can also measure an area within a polygon.



Print Tool


With *Maps Add-on*, users can print a display view of a map that shows geocoded points.

Feature Search Tool

When a map contains many features, the Feature Search tool pinpoints a feature on the map if you know the name of the feature label you are looking for.

New Find My Location Tool

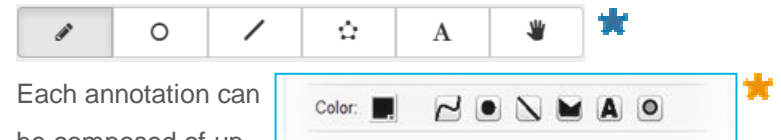
A new tool, Find My Location, is also available to those with *Maps Add-on*.

Quickly navigate to your location on the map by clicking the Find My Location icon .

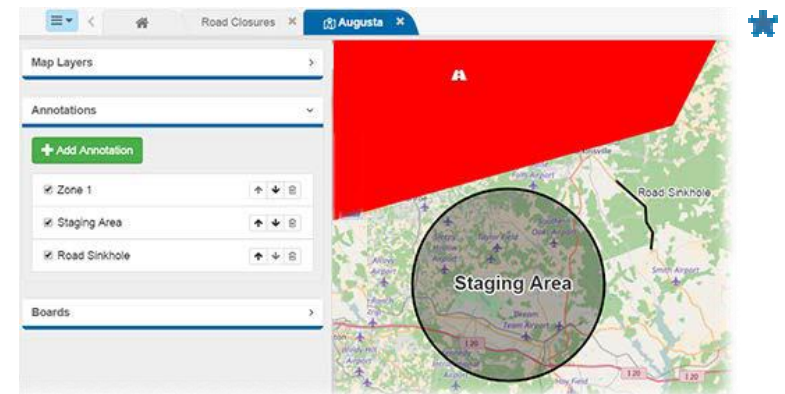


Annotations Tool

Use tools in the *Annotations* section to add elements to the map that designate warm zones, staging areas, and so forth.



Each annotation can be composed of up to one static feature or text element, such as a polygon, line, circle, or label. Once created, annotations can be re-ordered as needed via the side navigation menu.



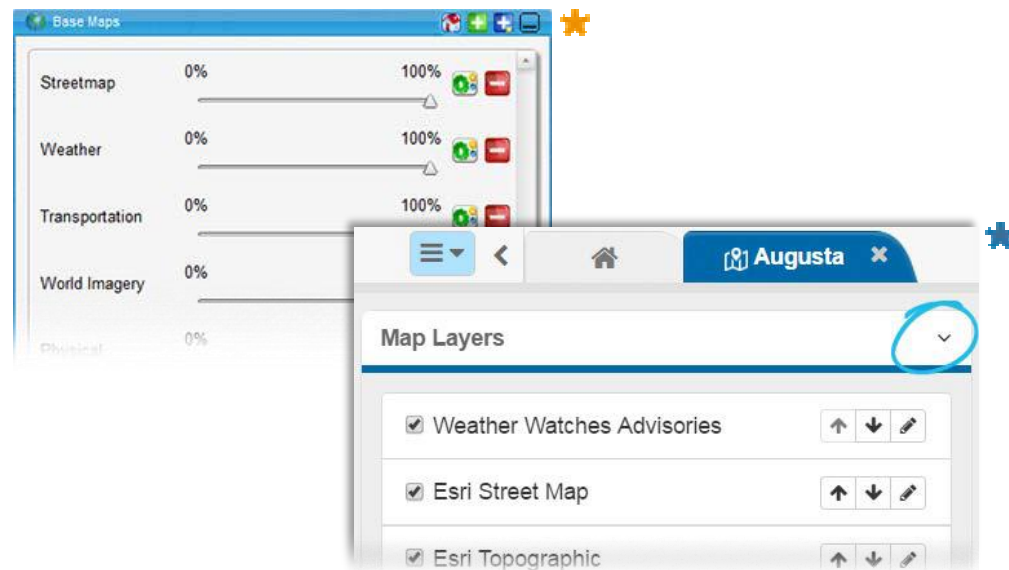
USERS

Feature Management

Managing features on the map is easier than ever before. Depending on whether your organization is using *Maps* or *Maps Add-on*, you may be able to update a board entry directly from the map or vice versa.

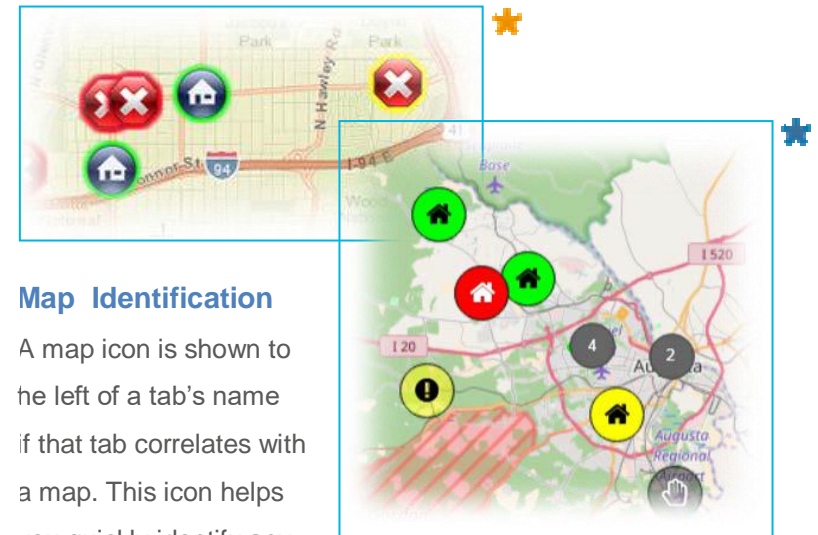
Map Layers

Map layers, known as Base Maps in the *Mapper* solutions, are easily managed from the side navigation menu for those with *Maps Add-on*. Similar functions seen in Base Maps for *Mapper* apply to layers in *Maps Add-on*: you can still re-order layers, change the opacity of the layers, and exclude layers from displaying on the map. However, *Maps* now provides expanded external data support, including support for Esri Feature Services.



Icons

The colors of icons are more distinct. Rather than having a subtle halo of color when the status of the entry it represents is changed, the icons themselves are colored to reflect an updated status. Additionally, icons are more flexible due to the new icon database and their integration with WebEOC lists.



Map Identification

A map icon is shown to the left of a tab's name if that tab correlates with a map. This icon helps you quickly identify any open maps amidst any open boards or plugins.



Additionally, as in open boards, the tab turns dark blue when in focus and light blue when updated information is available as a result of record updates by system users.

If you have questions about changes not covered in this document, more information is available on the WebEOC [Client Hub](#) or by contacting Critchlow at info@critchlow.co.nz or +64 4 472 8244.