

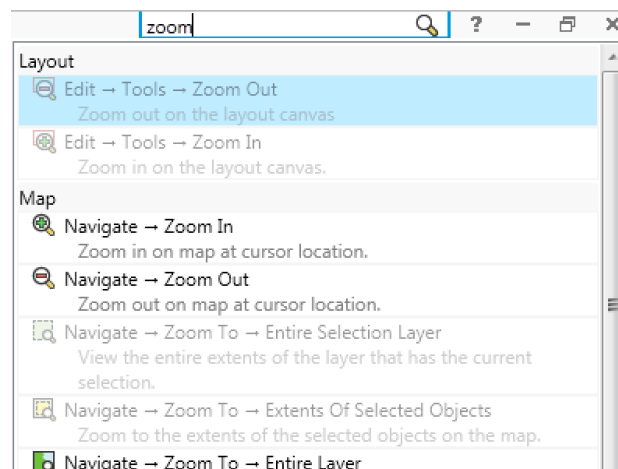
Getting started with MapInfo Pro™ v17

When you start up MapInfo, you'll now see a new Welcome screen which contains immediate access to your recent work as well as a convenient place for useful resources. Many of these resources come from the newly launched Location Intelligence Community site. This site provides a wealth of new information for PB product users including tutorial videos, documents, discussion groups, private topical groups as well as access to PB and Critchlow experts on a variety of topics.

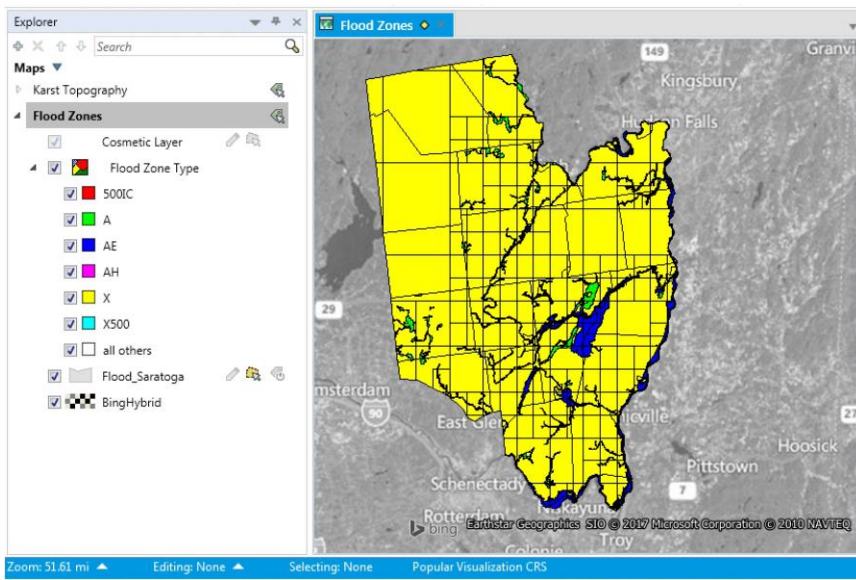


Signup for LI360 and join the community of Location Intelligence professionals: <https://pitneybowes.force.com/LI360>.

If you have not previously used MapInfo's ribbon interface, try out the new Quick Search capability. This is located at the top right of the MapInfo screen. From here, just type in what you are looking for and Quick Search will show you where to find MapInfo's commands on the ribbon. And for convenience, you can launch the commands right from the QuickSearch list.



Mapping and Editing



Themes in the Layer Control

Individual Value, Graduated and Ranged themes are now displayed within the Layer Control. **Ranged Themes were added in v16.

For Individual Value themes, you can selectively turn bins on or off to highlight only the data that you wish to draw attention to.

Map Toolbar Customisation

Right-click on a map to get a toolbar with popular mapping functions conveniently at your disposal. For v17, the Info Tool & Ruler has been added to the default set. You can also customise it by adding other mapping functions that are your favorites.



Data Editing - Reshape

Improved data editing using reshape so that reshape mode will stay on until you explicitly turn it off. In previous versions, it would turn off unexpectedly if you accidentally clicked outside of the layer you are editing.

Create Points

CreatePoints now has the ability to automatically add the points to any open map or create a new map from the points.

Enhanced Image Quality

Bing imagery has been updated to a more recent tile set which provides more recent street network and is updated by Microsoft more frequently. You will notice a change if you use Bing Roads or Bing Hybrid tile sets. And MapInfo Pro now supports 32-bit raster imagery which provides better image rendering and the ability to use alpha channels in raster images.

Hotkey Improvements

- Just press Ctrl+Shift+I to automatically open the InfoTool
- Press ESC key on map to always return to the Selection tool

Tools

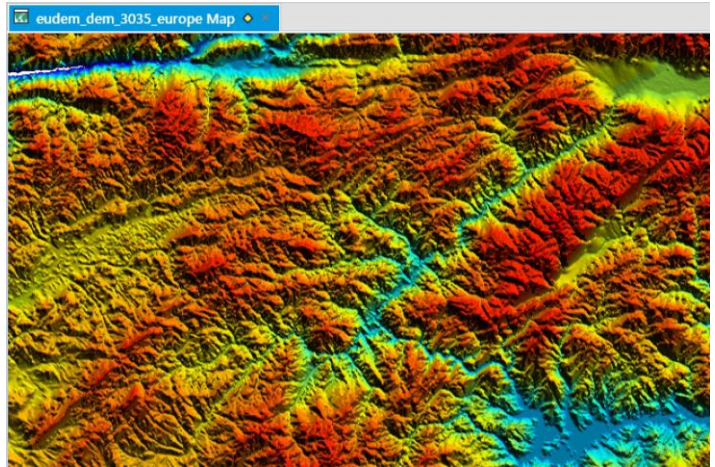
- PB have brought back the Ring Buffer and overview tools
- MapCad tools now load automatically into the Spatial tab plus a couple in the Map tab for Text Objects

Raster/Grid

MapInfo Pro v17 continues to build on and enhance the raster capabilities. You'll see better quality imagery with smoothening to remove jagged edges and better appearance when viewed at high resolution.

Also, new features for this release:

- Warp Image
- Polygonize – create polygons from raster data
- Align input raster with the geometry of the primary raster based on its interpolation method and other properties.



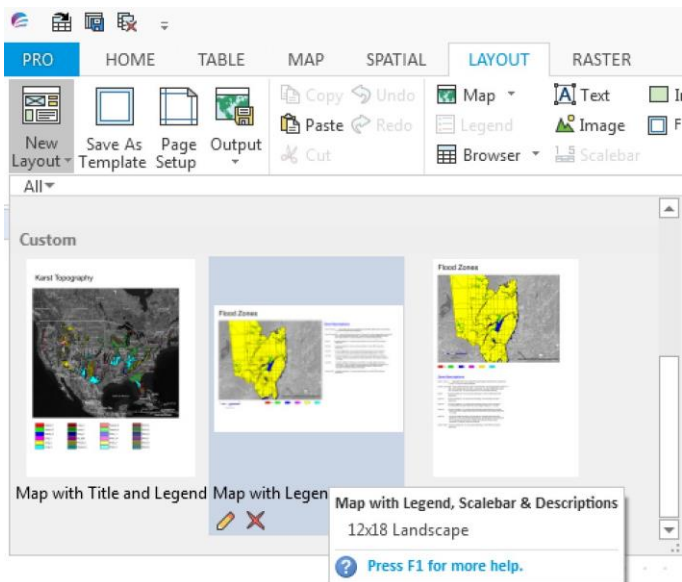
MapInfo Data Access Library for Add-Ins

The MapInfo Data Access Library is a set of classes and interfaces that allows .NET developers to create MapInfo Pro Add-ins that can easily Create, Search, and Update MapInfo Tables and other supported database formats such as Oracle, SQL Server, GeoPackage. The Library is based on a subset of the MapInfo MapXtreme™ SDK product, mainly the Data Access functionality. Currently the MapInfo Data Access Library is only available for use with MapInfo Pro Add-ins.

Features include:

- Fully Capable Data Access Object Model – Create MapInfo Tables, Insert, Update, Delete, Select, Join multiple tables, Search using a well thought out API
- Full MySql Support – Note that there are differences from MapBasic Syntax
- Complete Geometry Object Model – Supports efficient reading, creation and editing of all MapInfo Geometry types, including text objects. Also supports conversion to and from Well Known Binary, Well Known Text and GeoJson formats
- Full Coordinate System Support
- Thread-Safe – Can be used to create background tasks in MapInfo Pro or run processing on secondary threads
- Supports Most Pro Data formats – not all. Ex: No spatial support for PostGIS
- Pro style transactions on MapInfo and MapInfo Extended tables - This allows for background threads to edit tables open in Pro and let the end user decide to commit or revert the changes
- Documentation – API Reference Guide, User Guide, MySql reference.

Layout Designer



Layout Templates

Create and share your own layout templates in portable “.LAY” files. Templates are easily accessed and reused by selecting from a gallery of your layout templates or can be filled in using MapBasic. There are a few samples to get you started. You can also easily make your own to suit your specific needs.

Smart Text

Insert placeholders into your textboxes that that get expanded when you use a template. Examples of this might be page number or current date – i.e. `${PageNum}` or `${Date}`. See the release notes for instructions on how to use this feature.

Smart Guides

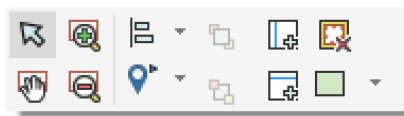
PB have added Smartguides and improved snapping so that it is much simpler to align objects or snap them together quickly. Smartguides work by snapping objects on the layout together as they move close together.

Paper Margin

The paper margin is now shown on the layout. And you can snap objects to the margin so that they are not accidentally outside the printable area.

Layout Toolbar

When you right-click on a layout, you'll now get a mini toolbar with some popular layout functions conveniently at your disposal. This will allow you to more quickly style and edit your layout without the need to use the ribbon. This toolbar can also be customised.



Zooming/Panning

Moving around the Layout canvas is easier:

- When zooming in/out using the zoom tool or mouse, the zoom operation is now centered on your mouse location.
- A new “Fit Layout in Window” option in the layout context menu to quickly zoom out see the entire layout.
- Hold down the middle mouse button to pan around the layout.

Frame Deactivation

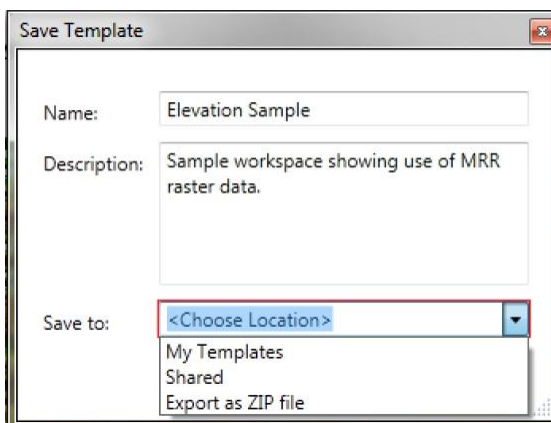
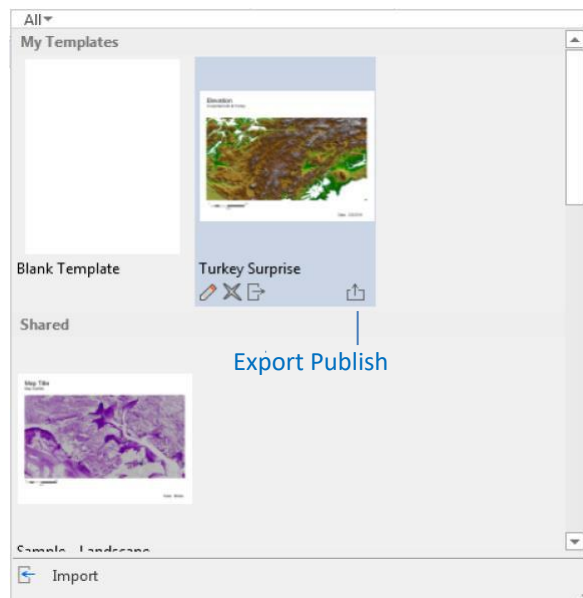
Map and Browser frames can be activated to directly edit them from within a layout. Deactivation is done with either 1) Alt-Click of the mouse or 2) clicking outside the frame. There's also the addition of a preference to disable this second method, as some find it distracting.

Sharing templates within your workgroup (Publish)

You must first setup the Workgroup Directory in Directory Preferences. Once this is setup, you'll see a new Shared section in the Layout Templates gallery as well as the Publish icon will appear. To share your template, just press the publish icon and MapInfo will copy it to your shared (workgroup) directory. Anyone else in your workgroup that has also setup the workgroup directory will automatically see the new template and can begin to use it. Also, when creating a new template, you can save it directly to the Shared location.

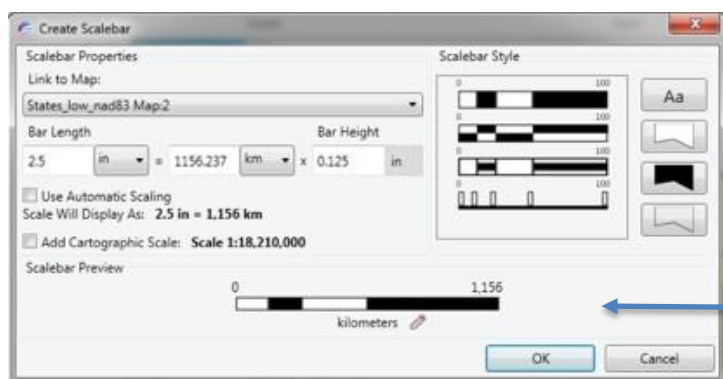
Sharing templates externally (Import/Export)

You can even share templates with anyone who is external to your organization. The Export feature will package a template as a ZIP file that can be sent via email or posted online. Anyone with MapInfo v17 can use the Import feature to import the template into their environment.



Scalebar Units

You can now edit the units displayed on the Scalebar to be anything you like – such as Km, Kilometers, Kilometres, Kill-O-Meters, Koalas, whatever you like!



Geocoding and Drivetime Regions

These are new Add-in modules with a much-improved experience for quickly geocoding tables of addresses or generating drivetime isochrones. These will work with existing Spectrum servers or our new cloud services.

Each copy of MapInfo Pro will come with some free credits to get you started using the cloud services. You will need to register to use them. Once signed up, you can also purchase a subscription for additional credits once MapInfo v17 launches. The upgrade plans are not available at the time of the beta.

You'll see two new tools in the Tool Manager called Drivetime and Geocode and they should be preloaded when you install the beta. Once loaded, these tools will be available in the Spatial tab in the Regions and Geocode controls.

Drivetime Regions

Input Objects

Current Selection

Output Table

Store_locations_DT

Region Name

CityName

Display on a map

☒

Theme

More Options

Driving

Walking

Time

Distance


Minutes

Regions:

5

10

15




Credit Check

Regions: 289

Balance: 1,390 credits

Cost: 1,445 credits



[Upgrade Plan](#)

Save as Default

Process

Close

Help

Geocode

Input Table

Addresses

Records to Geocode

All

Output Table

Same as input

More Options






Geocode Level

Street

Matching

Automatic – Accept First

Symbol Style



More Options

Data Check

☒ Lat & Long fields

☒ Output fields mapped

☒ Output table is writable


☒ Verify Data Sample

Credit Check

Records: 289

Balance: 1,390 credits

Cost: 1,445 credits



[Upgrade Plan](#)

Save as Default

Process

Close

Help

Critchlow has been providing the MapInfo suite of products to New Zealand for over 25 years.

For more information, contact Critchlow: info@critchlow.co.nz | +64 4 472 8244