



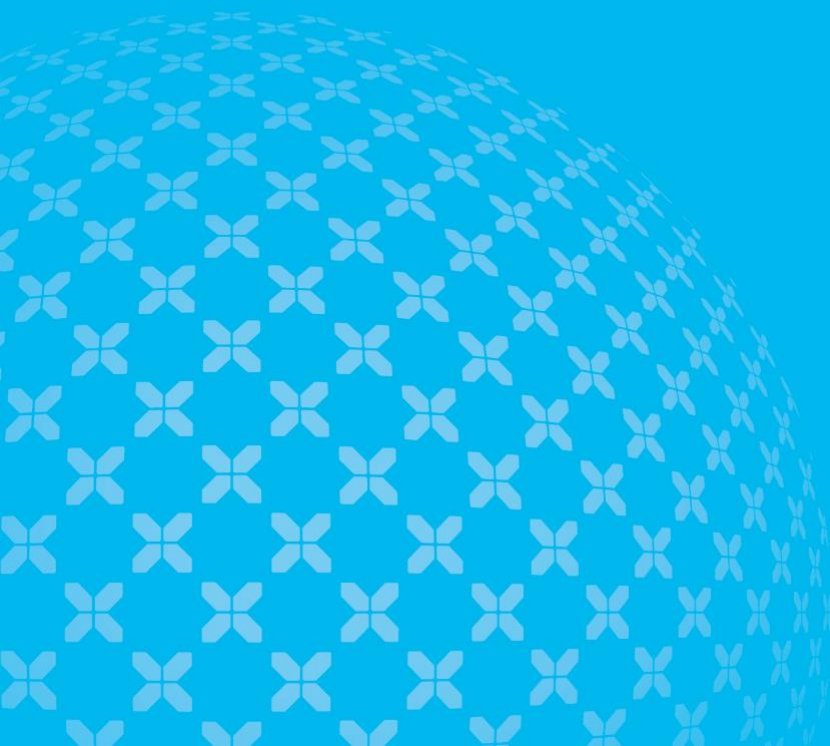
CRITCHLOW

NationalMap[®]

RELEASE NOTES OVERVIEW

APRIL 2016

Over 80% of business data has a strong location element. This location content can unleash a great deal more potential than examining the data on its own.



INTRODUCTION

These notes are a brief overview of the most recent reviews and updates we've made to NationalMap and are taken directly from the April Release Installation and Release Notes.

NationalMap is the most detailed, accurate and complete mapping solution for New Zealand organisations.

NationalMap is engineered with context, analysis and business integration in mind, making it the essential solution for all of your mapping and location-based applications. The NationalMap dataset allows your data to be displayed and analysed in context with the surrounding geography.

NationalMap provides street-level mapping with unparalleled display quality and data accuracy. It is widely recognised as the most comprehensive, accurate and up-to-date New Zealand map data and is trusted by many global and local companies where accuracy, especially for road information, is critical to their business.

Including the up-to-date Critchlow proprietary road network and a gazetteer of place names and landmarks, NationalMap is a comprehensive digital map solution. Also included are a useful range of boundaries for local and regional government administration, such as communities of interest, postcode boundaries and statistical areas, and many other topographic data layers.

Specialist add-on modules are also available including:

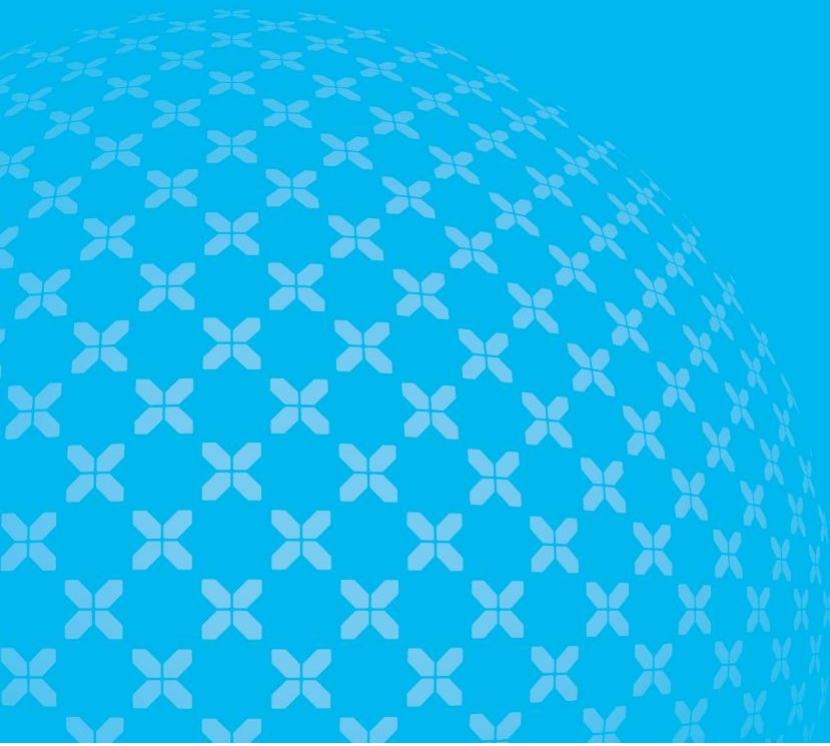
- Cadastral land parcel information provisioned through the LINZ Data Service (LDS)
- Routing application to enable journey planning and route analysis to assist in fleet management among other applications.
- Elevation information including contour data and digital elevation models

NationalMap is completely scalable in its deployment allowing the purchasing of whole, contiguous or discrete areas ranging from the whole country, to North and South Islands, regional councils down to territorial authorities.

NationalMap is also directly compatible with other data products offered by Critchlow, including Visual Census. This eliminates the need for user integration and configuration, providing seamless overlays and ease of use through common datasets.

The data in NationalMap is continuously reviewed and improved by our dedicated team of data analysts. They use various sources to improve and validate the data that is supplied to you.

The following section describes the changes and improvements we have made to NationalMap since the previous release.



WHAT'S NEW in April 2016 release

Features and Changes

Ongoing maintenance has seen a number of revisions to the data which goes into NationalMap. These include the addition of newly opened roads, ongoing positional accuracy improvements, and a review of cycleways, fords, and ferry routes; as well as updates to some POI (points of interest) categories.

Roads

As part of our ongoing maintenance, we are continuously reviewing our road network in conjunction with district and city councils, the NZTA, RAMM¹ Software Ltd, and LINZ. This process has resulted in considerable improvements in both road alignment and attribution.

From the previous NationalMap supply, we have carried out a number of reviews, most notably:

- A full review and positional accuracy improvement of all Primary and Collector roads (to an accuracy of +/- 2m) of the entire South Island and 75% of the North Island, including Auckland. This review includes:
 - Improved Junction geometry
 - Improved Real world alignment
 - Improved Network Connectivity
 - Improved Network routing attribution (one way roads and turn restrictions)
- A review of Cycleways and Fords. See below for details.

Change or alteration	From Oct 15 to Apr 16	From Apr 15 to Oct 15	From Oct 14 to Apr 15
Number of new roads	1532	719	628
Number of roads with road name alterations	240	175	1510
Number of roads with speed limit alterations	450	2350*	1200
Number of roads with positional accuracy improvements	22523	13750	4600

Figure 1 Comparison of changes for the past 3 NationalMap deliveries

* This number is high because of a specific project to review all speeds

¹ Road Assessment and Maintenance Management

Cycleways

A Review of Cycleways, in Auckland and Christchurch, using data from the territorial authorities' RAMM databases and the latest aerial photography.

This has resulted in a rich connected network of cycle only and shared cycle/pedestrian paths which provide seamless connectivity to the roading network



Figure 2 Example of cycleways following the review

Fords

Fords have now been incorporated into the NationalMap Routing add-on, with appropriate routing attributes. See the document "NationalMap Routing User Guide.pdf" in the Documentation folder on your install disk or download ZIP file.



Figure 3 Fords have now been added to improve routing

Ferries

A review of Ferry Routes for all public passenger ferries was conducted

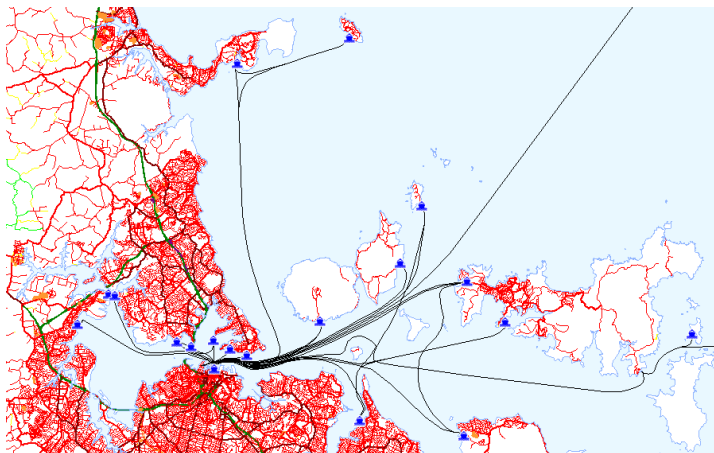


Figure 4 New ferry routes in Auckland

The result is 101 ferry routes run by 17 different companies representing a total travel time of 80 hours departing from 47 different terminals

Places

The following categories of places and points of interest have been completely reviewed:

- School
- Preschool
- Education
- Flora and Fauna
- Parks and Reserves (including Park polygons)
- Transport (Ferry Terminals in conjunction with ferry route review)

New Symbol Files

Please note that new symbol files have been added to better display Points of Interest, see the **Error! Reference source not found.** chapter on page **Error! Bookmark not defined.** below for installation details.



CRITCHLOW

Critchlow Limited

Level 2

22 The Terrace, Wellington 6011

PO Box 4103, Wellington 6140

New Zealand

© October 2015 Critchlow Limited

P: +64 4 472 8244

0800 MAPPING (0800 627 746)

enquiries@critchlow.co.nz

www.critchlow.co.nz